

**BOROUGH OF ORWIGSBURG  
SCHUYLKILL COUNTY, PENNSYLVANIA**

**ORDINANCE NO. 415**

AN ORDINANCE OF THE BOROUGH OF ORWIGSBURG, SCHUYLKILL COUNTY, PENNSYLVANIA, AMENDING ORDINANCE NO. 326 TO PROVIDE ADDITIONAL TRAFFIC REGULATIONS.

BE IT ENACTED AND ORDAINED BY THE BOROUGH COUNCIL OF THE BOROUGH OF ORWIGSBURG, SCHUYLKILL COUNTY, PENNSYLVANIA, and it is hereby ENACTED and ORDAINED by the authority of the same a follows:

1. Ordinance No. 326, known as the prescribing parking and traffic regulations in the Borough of Orwigsburg is amended to add Article III, Section 3 is amended to establish and add the following stop intersections:

**Article III, Section 3 – Stop Intersections**

S. Liberty Street

At the northwest corner of its intersection with Ridge Road for southbound traffic on South Liberty Street.

At the southeast corner of its intersection with South Wayne Street for north bound traffic on South Liberty Street.

N. Walborn Avenue

At the northwest corner of its intersection with West Mifflin Street for south bound traffic on North Walborn Avenue.

At the southeast corner of its intersection with West Mifflin Street for north bound traffic on North Walborn Avenue.

**Article V, Section 1 – One-way Streets**

Article V, Section 1 designating one-way streets is amended to add and establish a one-way street as follows;

Walborn Avenue from south to north from West Market Street to West Mifflin Street.

**Article VI, Section 9 – No Parking Zones**

Article VI, Section 9 is amended to specifically identify the following as a no parking zone:

South side of East Market Street, east of South Washington Street in areas designated in Land Development Plan prepared by Brinkash Associates, Inc., June 10, 2011, which is attached hereto and incorporated herein.

All Ordinances or parts of Ordinance of the Borough in conflict herewith are hereby expressly repealed.

This Ordinance shall become effective immediately upon adoption or upon such time as official signs shall be erected on the streets affected by any of the sections of this ordinance.

DULY PRESENTED, ORDAINED AND ENACTED into an Ordinance this 10TH day of September 2014 A.D. BY THE COUNCIL OF THE BOROUGH OF ORWIGSBURG, SCHUYLKILL COUNTY, PENNSYLVANIA IN LAWFUL SESSION DULY ASSEMBLED.

ATTEST:

  
SHERRY M. EDWARDS  
BOROUGH SECRETARY

BOROUGH OF ORWIGSBURG

BY:

  
BUDDY A. TOUCHINSKY  
COUNCIL PRESIDENT

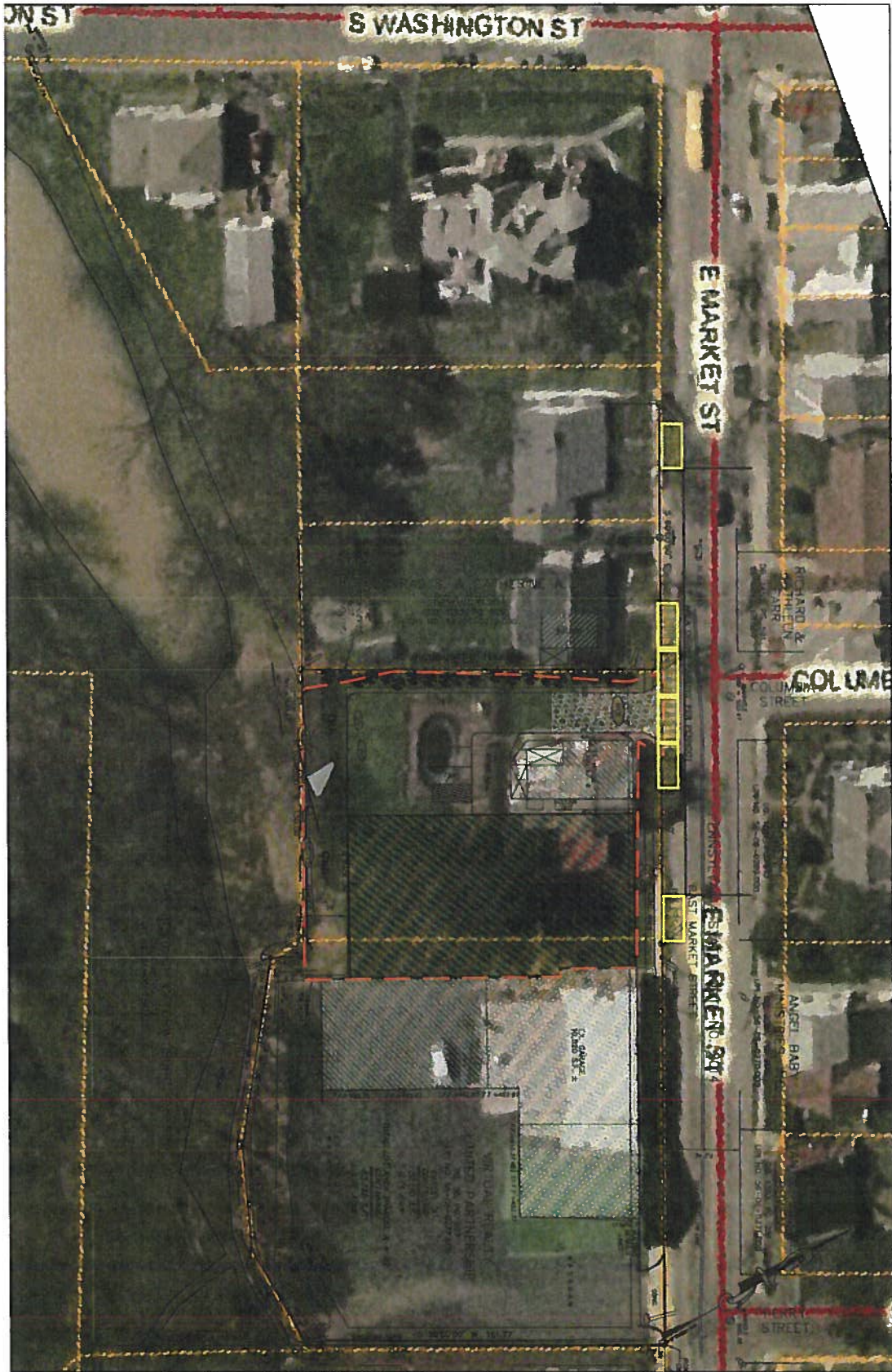
EXAMINED AND APPROVED THIS 10TH DAY OF SEPTEMBER, 2014 A.D.

  
BARRY BERGER  
MAYOR OF ORWIGSBURG

A TRUE COPY OF PROPOSED ORDINANCE NO. \_\_\_\_\_

ATTEST:

\_\_\_\_\_



PRELIMINARY/FINAL LAND DEVELOPMENT PLAN  
 OVERALL AERIAL EXHIBIT  
 VIRTUAL REALTY LIMITED PARTNERS  
 TOWNSHIP OF ORWIGSBURG, SCHUYLKILL COUNTY, PA

**BRINKASH ASSOCIATES, INC.**  
 SURVEYING & ENGINEERING  
 1713 CENTRE STREET ASHLAND, PA 17921  
 (570)-875-1018 (PHONE) (570)-875-1670 (FAX)

SEAL

SEAL

DATE: 4/8/11	BY: M.P.B.	DESIGNED BY: M.P.B.
SURVEY FILE:		DWG. FILE:
1	REVISIONS PER HANDBOOK REVISION 5/18/11	6/18/11
REV	DESCRIPTION OF REVISION	DATE

FILE NUMBER:  
112025